

ScreedBoard® 28

The Ultimate Sound Proofing Floor Board

ScreedBoard 28 is the ultimate single layer acoustic overlay treatment, featuring interlocking edges for installation convenience. Its high density and unique resilient layer provides unrivalled acoustic performance.



KEY BENEFITS

- ⬡ Only 28mm thick
- ⬡ Suitable for all types of timber and concrete floors
- ⬡ Robust Detail treatment for E-FT-5, E-FT-6 and FFT4
- ⬡ Hard wearing surface, looks and feels like a screed
- ⬡ Interlocking edges - no need for screws
- ⬡ Easy to cut and install, can be cut with a hand of skill saw

PHYSICAL PROPERTIES

Properties	Unit	ScreedBoard 28
Resilient layer composition	-	Recycled PES fibre board
Type and thickness of facing / batten	-	20mm HD Gypsum
Resilient layer thickness	mm	8
Overall thickness	mm	28
Board size / roll size / batten length	m	0.6 x 1.20
Weight	kg/m ²	26.00
	kg/sheet	18.72

ADDITIONAL INFO



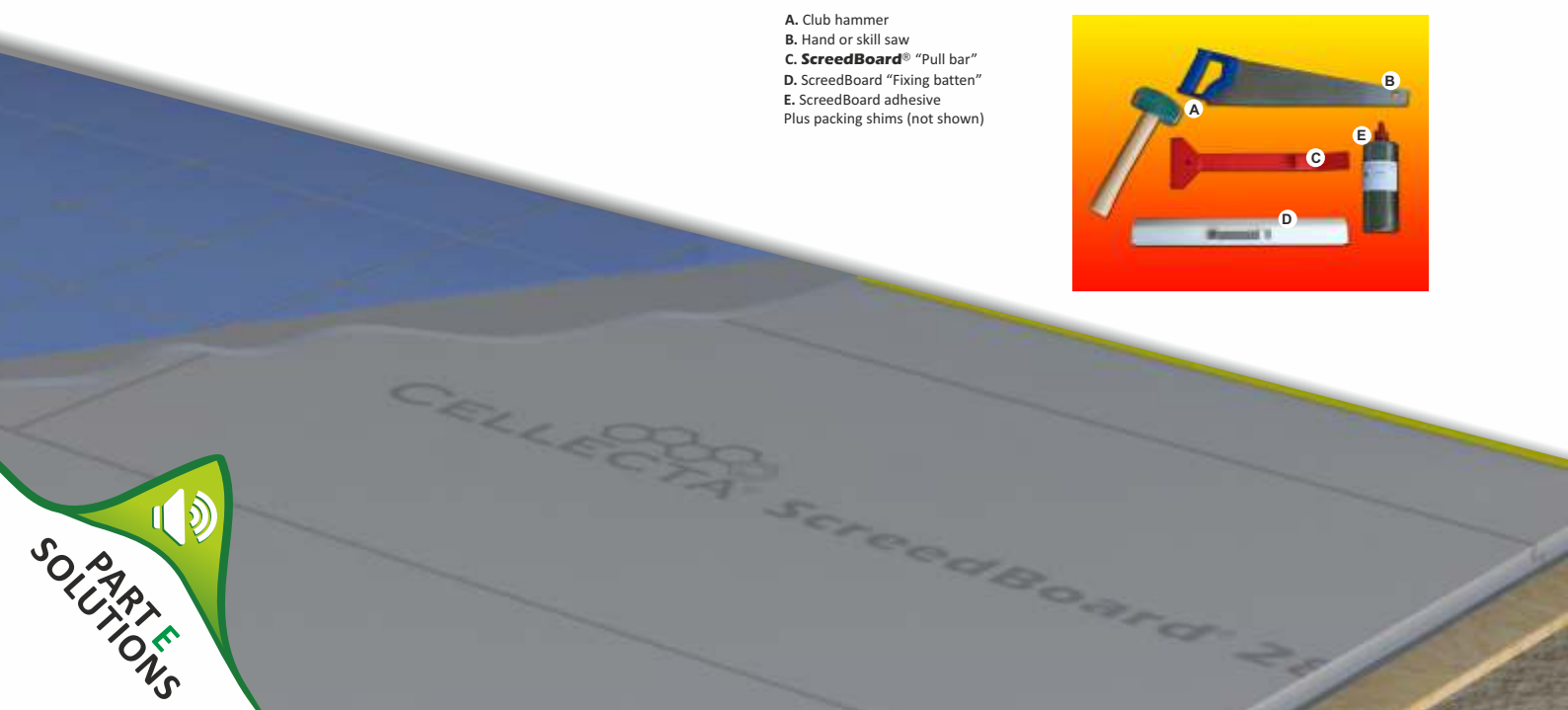
RESOURCES



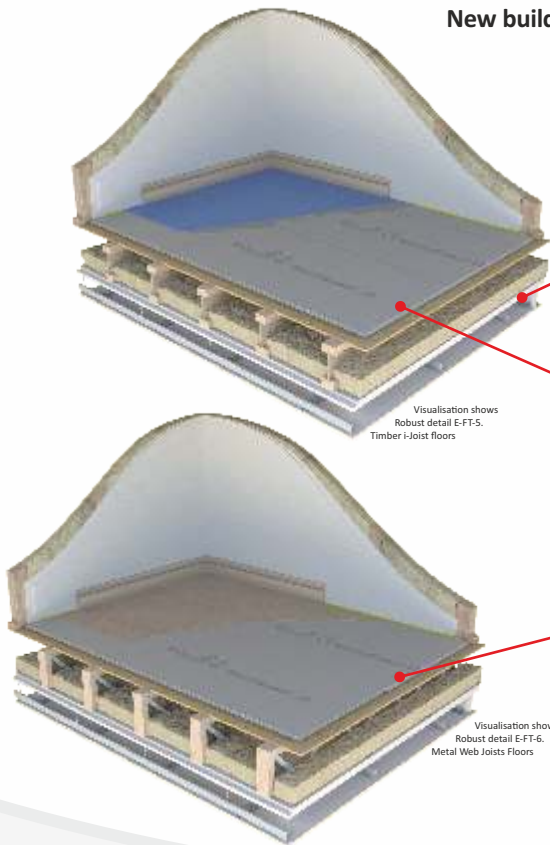
For full technical and application information please consult our full acoustic insulation brochures. To speak to someone regarding your requirements please call **08456 71-71-74** or email **CELLECTA** on technical@cellecta.co.uk

FIXING TOOLS

- A. Club hammer
 - B. Hand or skill saw
 - C. ScreedBoard® "Pull bar"
 - D. ScreedBoard "Fixing batten"
 - E. ScreedBoard adhesive
- Plus packing shims (not shown)

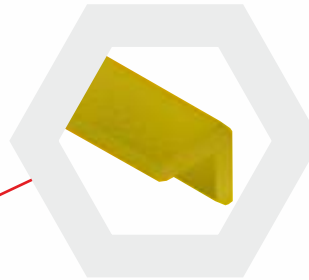


New build & Refurb. Acoustic treatment laid directly on timber/concrete sub-deck



Visualisation shows Robust detail E-FT-5. Timber Joist floors

Visualisation shows Robust detail E-FT-6. Metal Web Joists Floors



YELOfon® FS50

Lightweight, flexible extruded polyethylene strips. When installed around the floor perimeter they will eliminate acoustic flanking with the wall and the treatments



ScreedBoard 28

The ultimate dry screed acoustic over lay sound proofing floor board

INSTALLATION DETAILS

For the full installation guide, visit www.cellecta.co.uk and view the online video or download the Collecta app to your smart phone.

- ⦿ Ensure the sub-deck is clear and tidy
- ⦿ Lay **ScreedBoard® 28** on the sub-deck (timber or concrete)
- ⦿ Apply **ScreedBoard® Adhesive** to the boards tongue
- ⦿ Interlock the next **ScreedBoard® 28**. No screws required
- ⦿ Install **YELOfon® FS50** around floor perimeter to prevent acoustic flanking

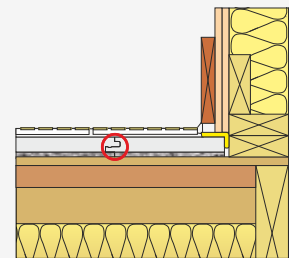
TECHNICAL ADVICE & SUPPORT

CELLECTA manufacture a range of high performance thermal and acoustic insulation products, supported by a technical advice line staffed by experienced consultants who can provide a number of useful services:

- ⦿ Technical and installation advice
- ⦿ Give advice on the most suitable product to use
- ⦿ Supply detailed fixing instructions
- ⦿ Arrange site surveys
- ⦿ Design specifications

TYPICAL ACOUSTIC PERFORMANCE

ScreedBoard 28 E-FT-6



Robust Detail mean performance

$$D_{nT,w} + C_{tr} = 51\text{dB}$$

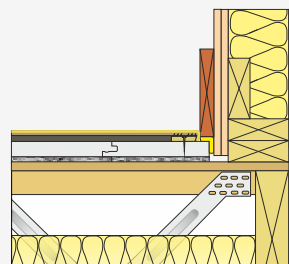
$$L_{nT,w} = 55\text{dB}$$

Typical PCT performance⁽²⁾

$$D_{nT,w} + C_{tr} = 51\text{dB}$$

$$L_{nT,w} = 55\text{dB}$$

ScreedBoard 28 E-FT-6



Robust Detail mean performance

$$D_{nT,w} + C_{tr} = 52\text{dB}$$

$$L_{nT,w} = 55\text{dB}$$

Typical PCT performance⁽²⁾

$$D_{nT,w} + C_{tr} = 52\text{dB}$$

$$L_{nT,w} = 55\text{dB}$$