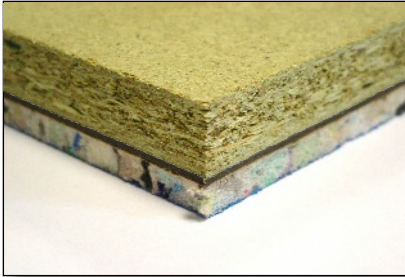


Trim 'Exclusive'

Structural Acoustic Floor Systems

Trim Defender 35

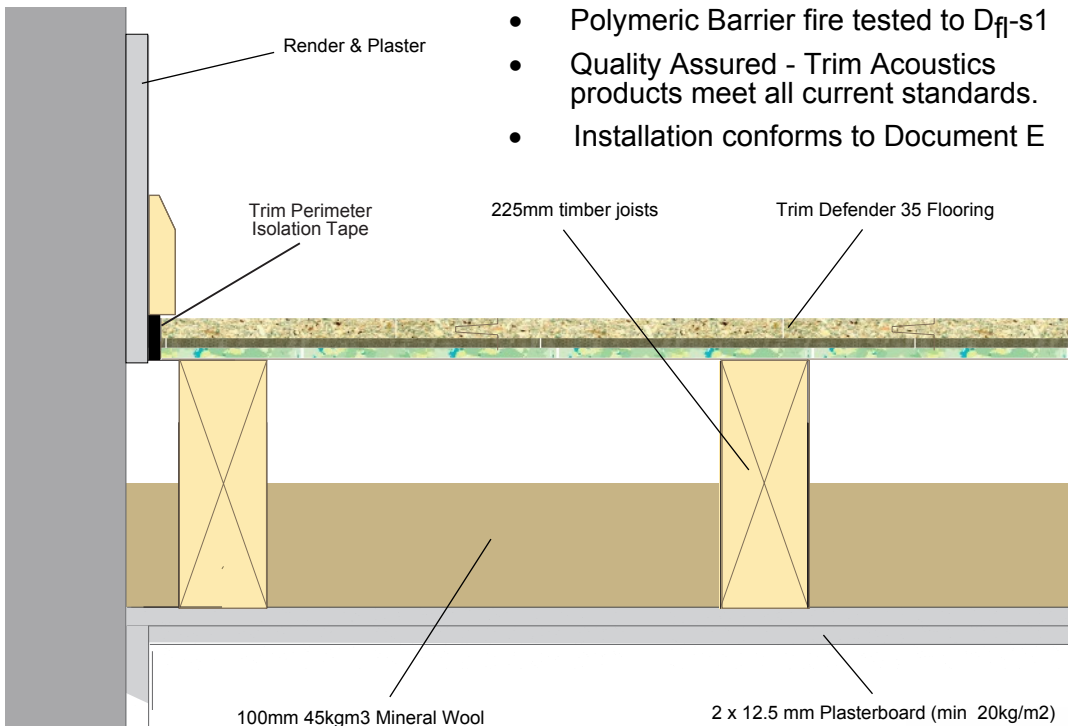
Structural flooring system designed for laying directly onto the floor joists



Trim Defender 35 should be laid directly onto the joists in a broken bond pattern with all joints glued and perimeters sealed using 37mm x 10mm Perimeter isolation tape.

Features & Benefits

- Supports Floor Loadings defined in BS: 6399-1: 1996
- Superior Performance - the recycled foam used has excellent impact Improvement
- Foam fire tested to BS4790
- Polymeric Barrier fire tested to D_f-s1
- Quality Assured - Trim Acoustics products meet all current standards.
- Installation conforms to Document E



Trim Defender 35 is the perfect choice where the existing floor is in poor condition and needs to be replaced. Defender 35 gives you your structural floor and acoustic floor all in one, so saving time and money compared to laying two separate floors.

Flanking Transmission

The acoustic performance of a floor can be compromised by the passage of sound through walls and ducts, which adjoin or penetrate a floor, a phenomenon known as flanking transmission. To reduce flanking transmission the acoustic flooring must be isolated from walls and other structural elements. Trim Acoustics Isolation Strip is a flexible polyethylene strip designed to form a seal between the flooring and the wall.

Performance

Treated Floor	D _{nT,w} + C _{tr}	L _{nT,w}
	46dB	56dB

Performance figures based on a ceiling construction of: 45kg/m³ insulation between joist & 2 x 12.5mm plasterboard.

System Components

Overall Dimensions	2400mm x 600mm x 35mm thick
22mm P5 moisture resistant chipboard	
Resilient layer composition	3mm Polymeric Barrier 10mm Recycled Acoustic Chip Foam With anti crumb encapsulating layer.